

**IMPORTANT: KEEP FOR FUTURE REFERENCE**

## INSTRUCTIONS FOR USE

### SAFETY NOTES

- **WARNING:** The child should at all times wear a safety harness correctly fitted and adjusted.
- **WARNING:** Do not leave the child unattended.
- **WARNING:** Do not use this highchair unless all components are correctly fitted and adjusted.
- **WARNING:** Ensure the harness is correctly fitted.
- **WARNING:** Be aware of the risk of open fire and other sources of strong heat, such as electric bar fires, gas fires etc. in the near vicinity of the highchair.
- Do not use the highchair until the child can sit-up unaided
- Do not use the highchair if any part is broken, torn or missing.

### CARE AND MAINTENANCE

- Do not attempt to remove the base once fitted.
- Regularly check the harness, locks and fittings for security and wear.
- Periodically check all parts are secure.
- Periodically check that the tray locks work properly.
- Clean with a damp cloth or sponge, a mild detergent may also be used. Do not use abrasive cleaners.
- To prevent scratching, do not use scouring pads, kitchen cleaners or detergents.

**UK CUSTOMERS SERVICE HELPLINE**  
TEL. 01980 629663 FAX.01980 629652

# KETER® Assembly Instructions



## KID'S HIGH CHAIR

Item No.: 17419355, 17180896

## PARTS INCLUDED:

- 1 Highchair
- 1 Seat pad
- 1 Tray
- 1 Front legs base
- 2 Back legs bases

## ASSEMBLY:

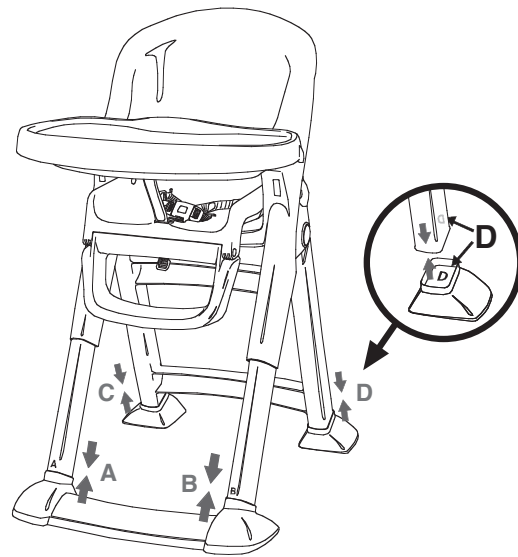
PLEASE READ INSTRUCTIONS BEFORE ATTEMPTING ASSEMBLY

1

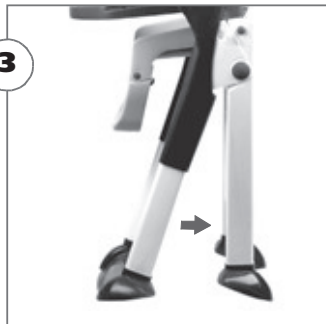
Carefully assemble the front legs base and snap it tight.

2

Carefully assemble the back leg bases onto the back legs and snap them tight.

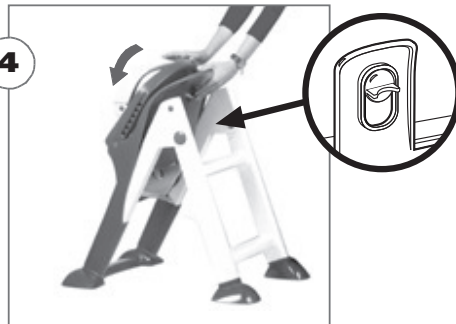


3



Carefully open the chair legs until you click them securely into position.

4



Carefully push the seat and tray down into position by security locks. Push the front of the seat down and click the back lock onto the catch at the rear of the back.

5



Pull up, in a straight line with one hand to secure the correct high chair position, ensuring the hooks are securely located.

6



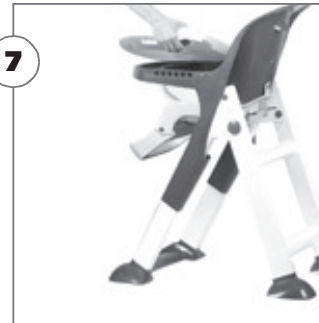
To adjust the large tray, push the clips and lock it onto the small tray.

## YOUR COMBINATION HIGHCHAIR MAY BE USED IN A VARIETY OF WAYS

The high chair has 6 height positions, which allow you to use it as a normal high chair, to reduce the height allowing you to use it at the family dinner table, and it also allows the mother the freedom to sit down whilst feeding the child.

## Folding:

7



The large tray can be removed with one hand.

8



Put the chair into its lowest position, carefully unlock the back security lock and fold up.

9



Press the side release buttons and fold the legs.

10



Now the high chair can be stored in a minimum amount of space.