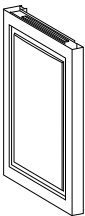
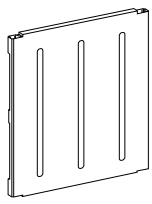
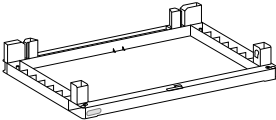
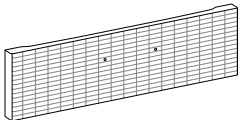

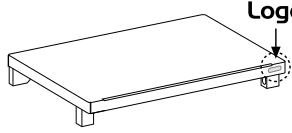
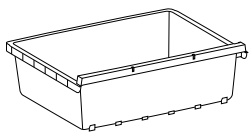


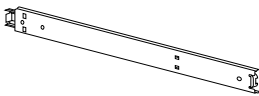
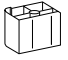
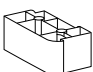


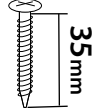
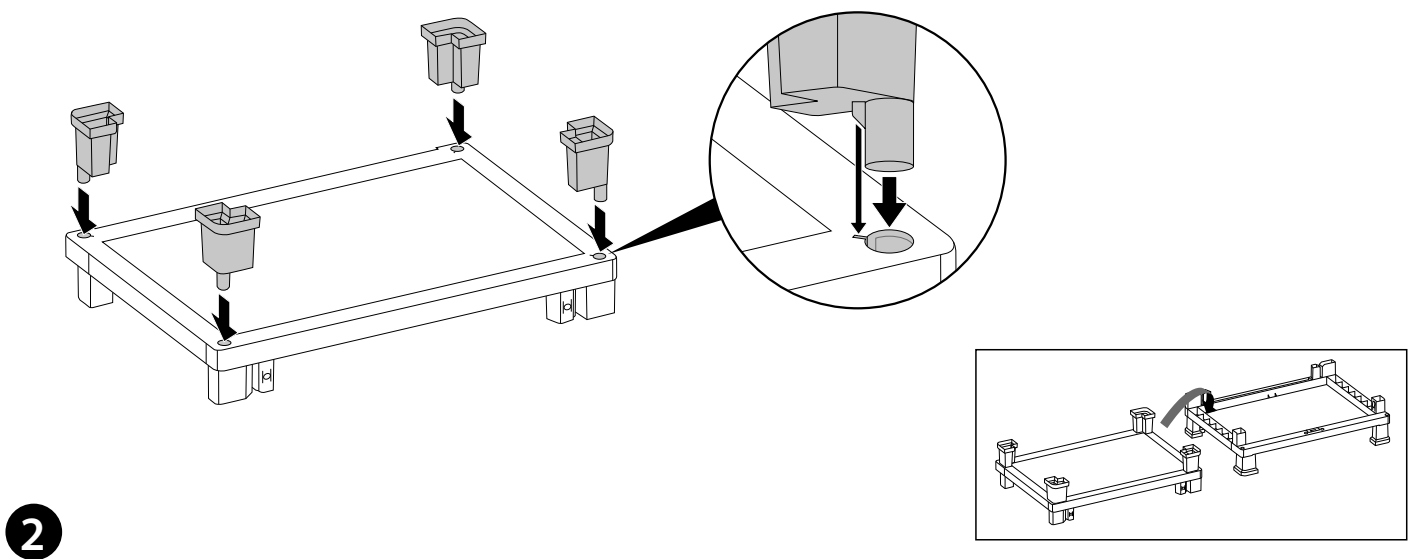
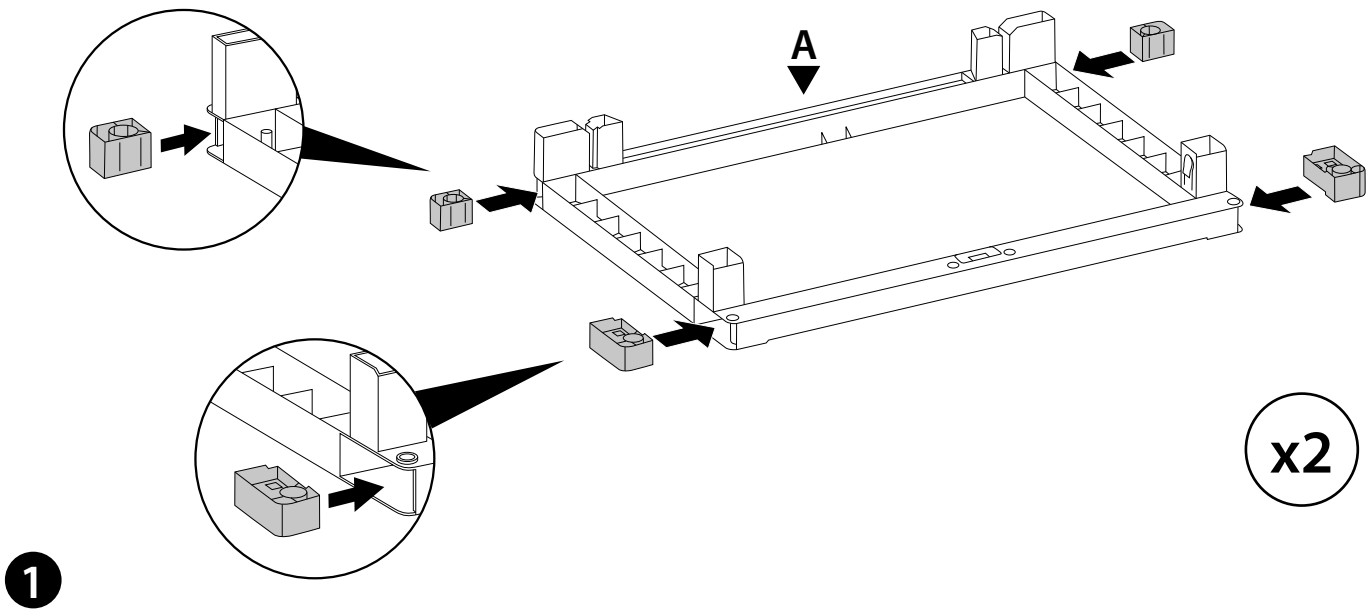
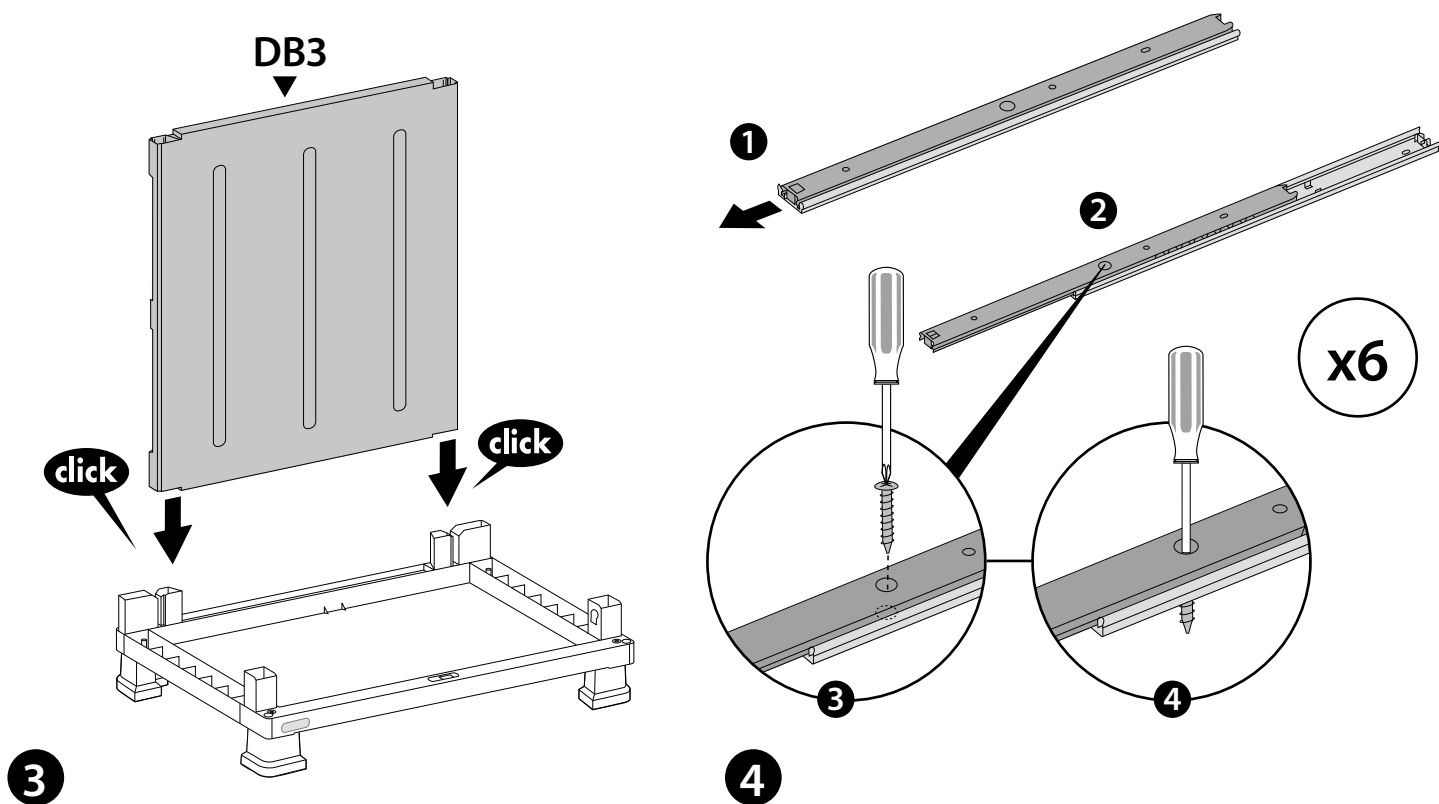


ASSEMBLY INSTRUCTIONS • INSTRUCCIONES DE ENSAMBLE • INSTRUCTIONS DE MONTAGE  
 INSTRUZIONI DI MONTAGGIO • ΟΔΗΓΙΕΣ ΣΥΝΑΡΜΟΛΟΓΗΣΗΣ • MONTAGEANLEITUNG

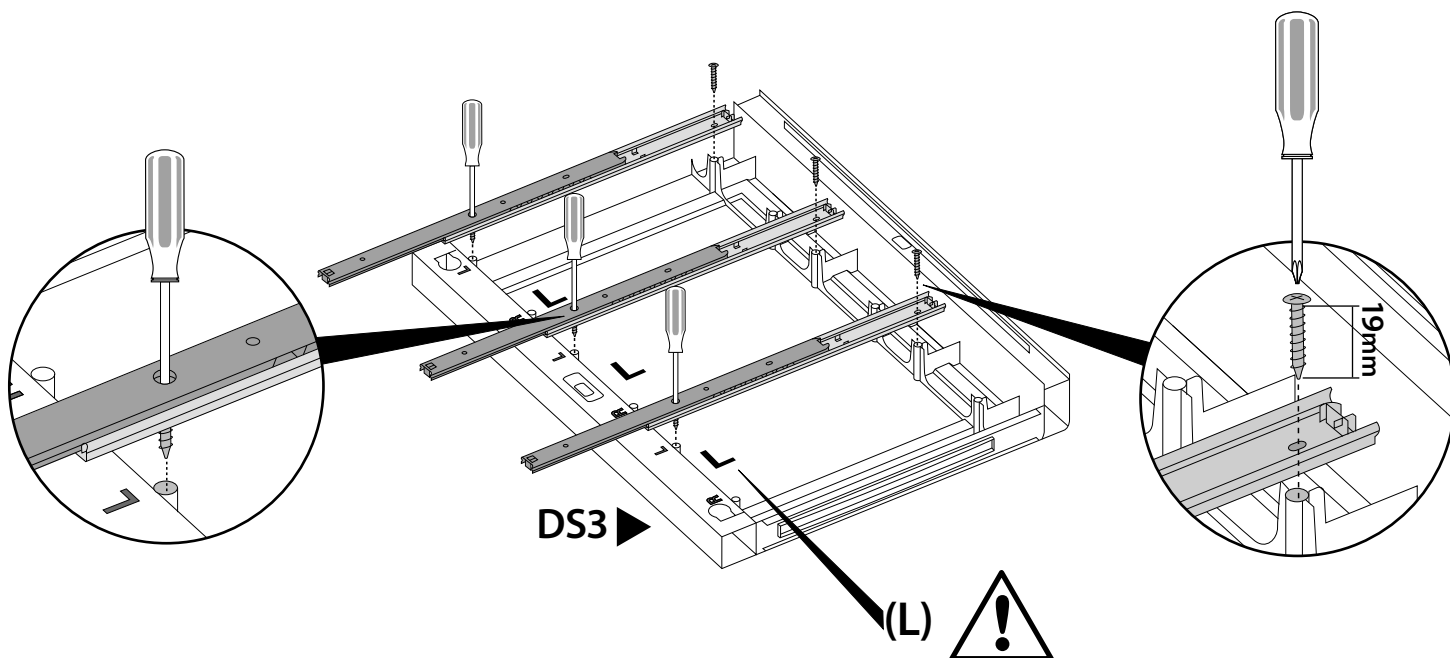
		 A x 1		 DF x 3	 DH x 3	
		 A x 1		 Dn x 3	 x4	
	 x6	 x4	 x4	 x4	 x24	 x6

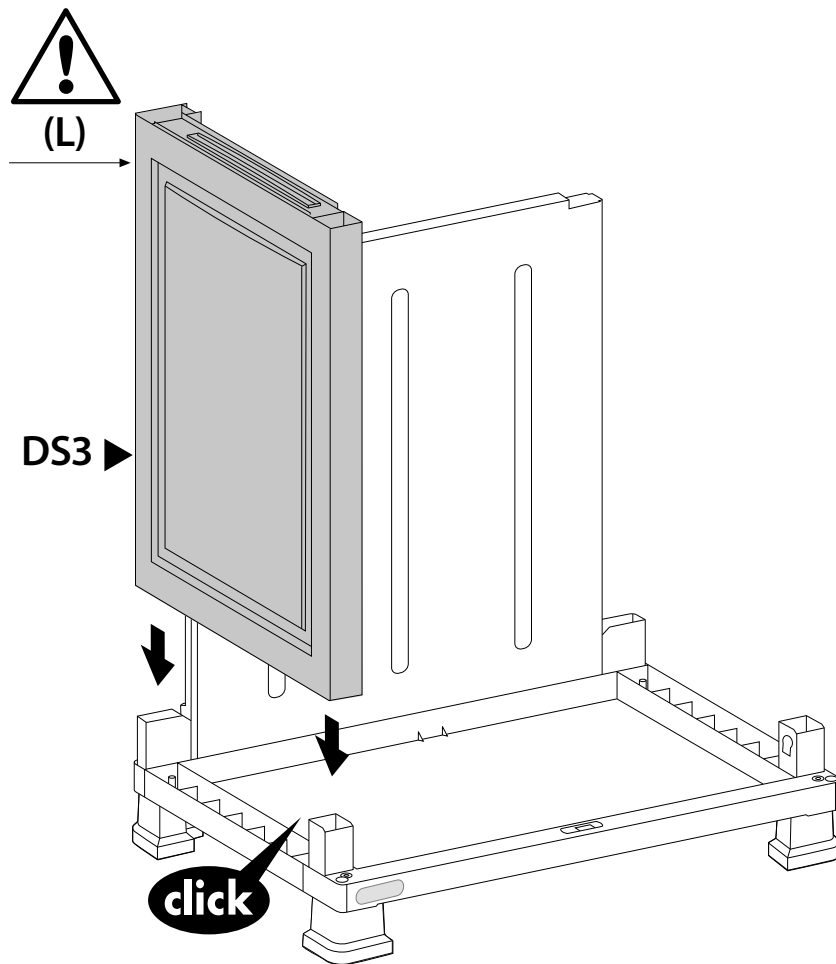


- Pull out inner slide from track until largest hole is placed above outer slide track's 1st hole.
- Tirez la glissière interne, jusqu'à que le plus grand orifice soit placé sur le premier orifice de la glissière externe.
- Ziehen Sie bitte das innere Gleitstück aus der Schiene, bis dessen größtes Loch überhalb des ersten Lochs der äußeren Schiene platziert ist.
- Deslice hacia afuera la guía interna, hasta que el orificio más grande de ésta quede ubicado sobre el primer orificio de la corredera externa.
- Estrarre la guida interna fino a sovrapporre il foro più largo al 1° foro della guida esterna.
- Τραβήξτε την εσωτερική πλάκα από τη ράγα μέχρι να τοποθετηθεί η μεγαλύτερη τρύπα πάνω από την 1η τρύπα της εξωτερικής ράγας.



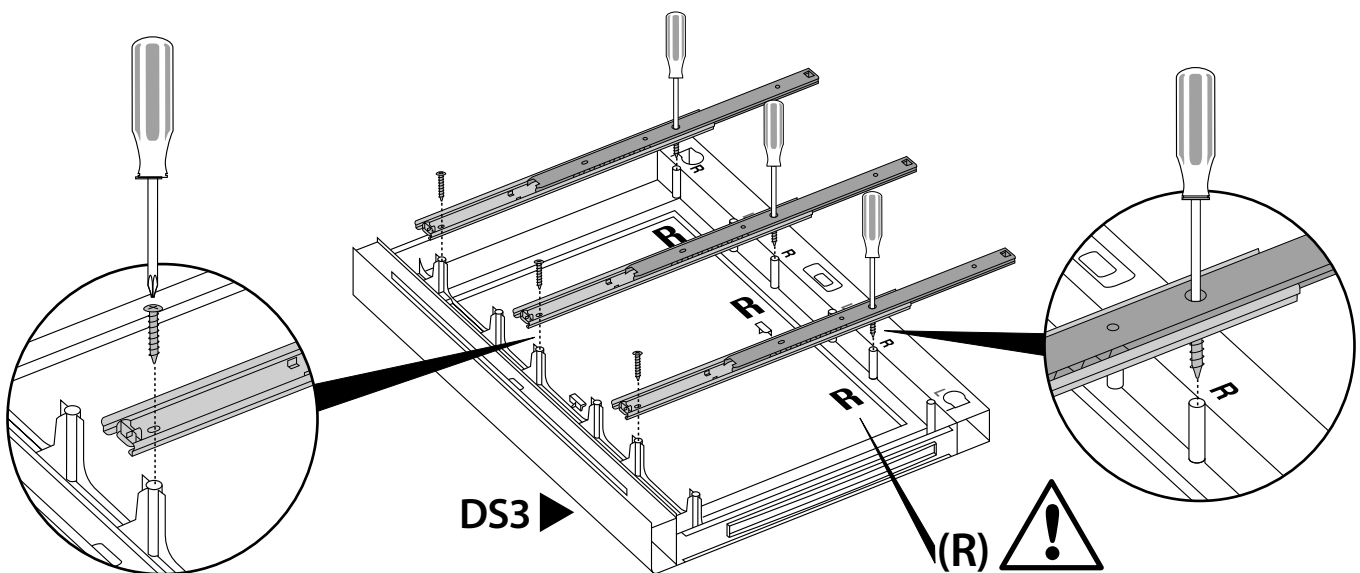
- Attach slide to hole "L" on side panel DS3
- Fixez la glissière de l'orifice "L" sur le panneau latéral DS3
- Bringen Sie die Schiene am Loch "L" der Seitenplatte DS3 an
- Coloque la corredera en el orificio "L", que se encuentra en el panel lateral DS3
- Fissare la guida al foro "L" sul pannello laterale DS3
- Προσαρτήστε την πλάκα στην τρύπα "L" στον πλαϊνό πίνακα DS3



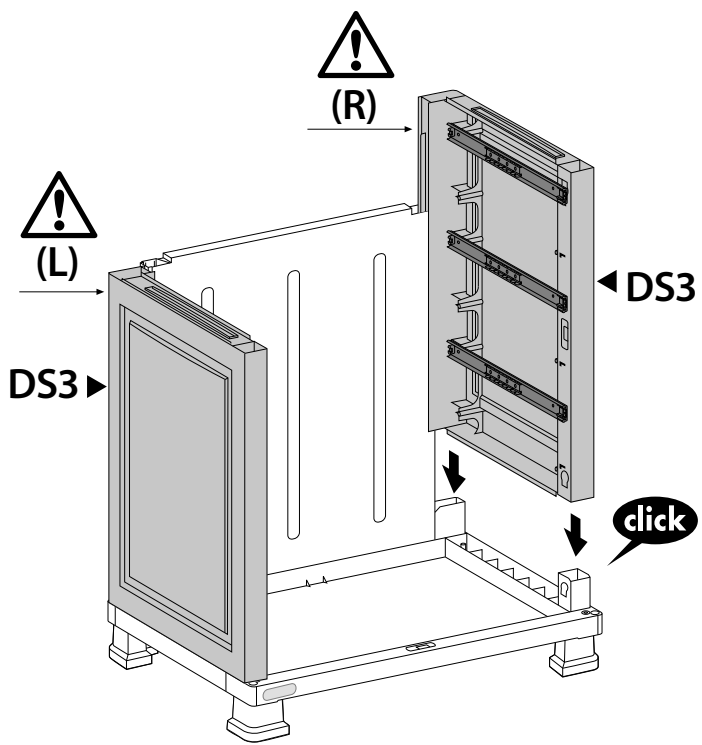


6

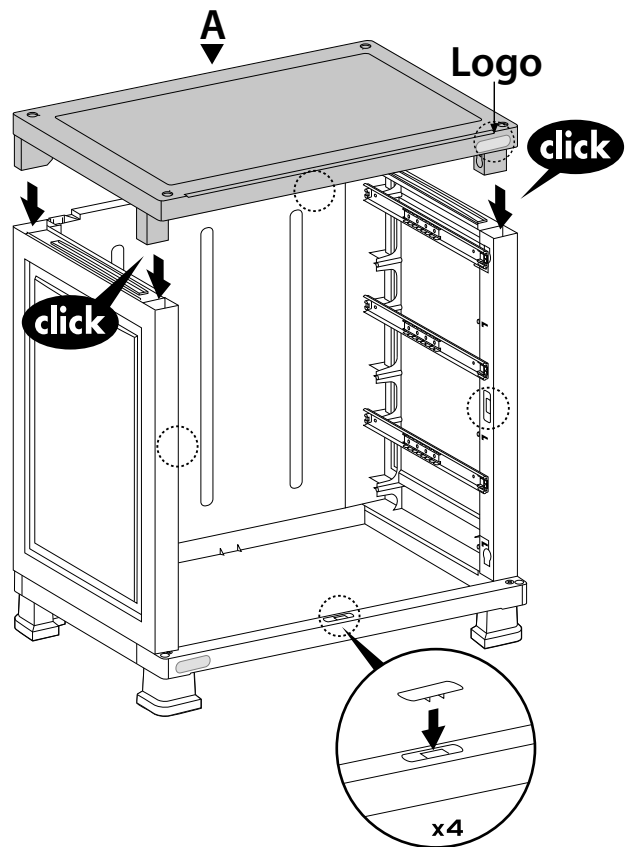
- Attach slide to hole "R" on side panel DS3
- Fixez la glissière de l'orifice "R" sur le panneau latéral DS3
- Bringen Sie die Schiene am Loch "R" der Seitenplatte DS3 an
- Coloque la corredera en el orificio "R", que se encuentra en el panel lateral DS3
- Fissare la guida al foro "R" sul pannello laterale DS3.
- Προσαρτήστε την πλάκα στην τρύπα "R" στον πλαϊνό πίνακα DS3.



7

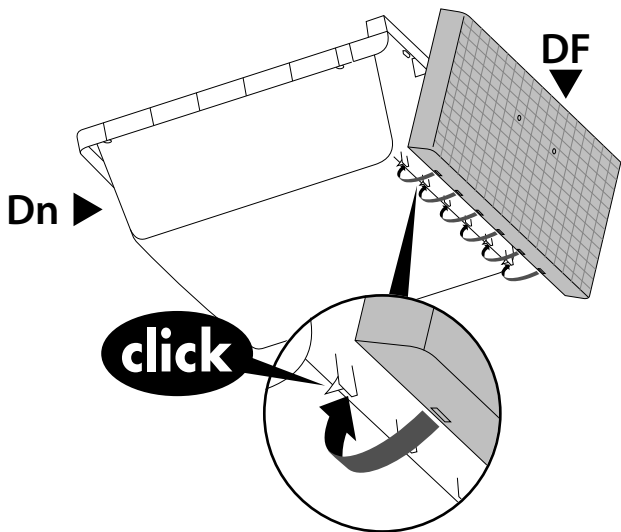


8

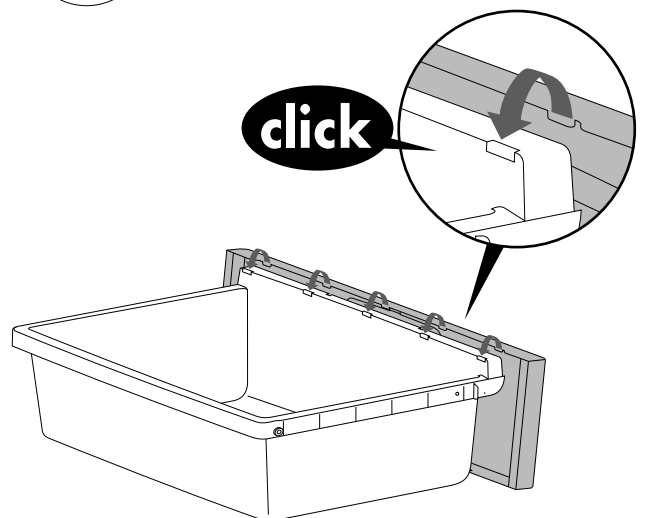


9

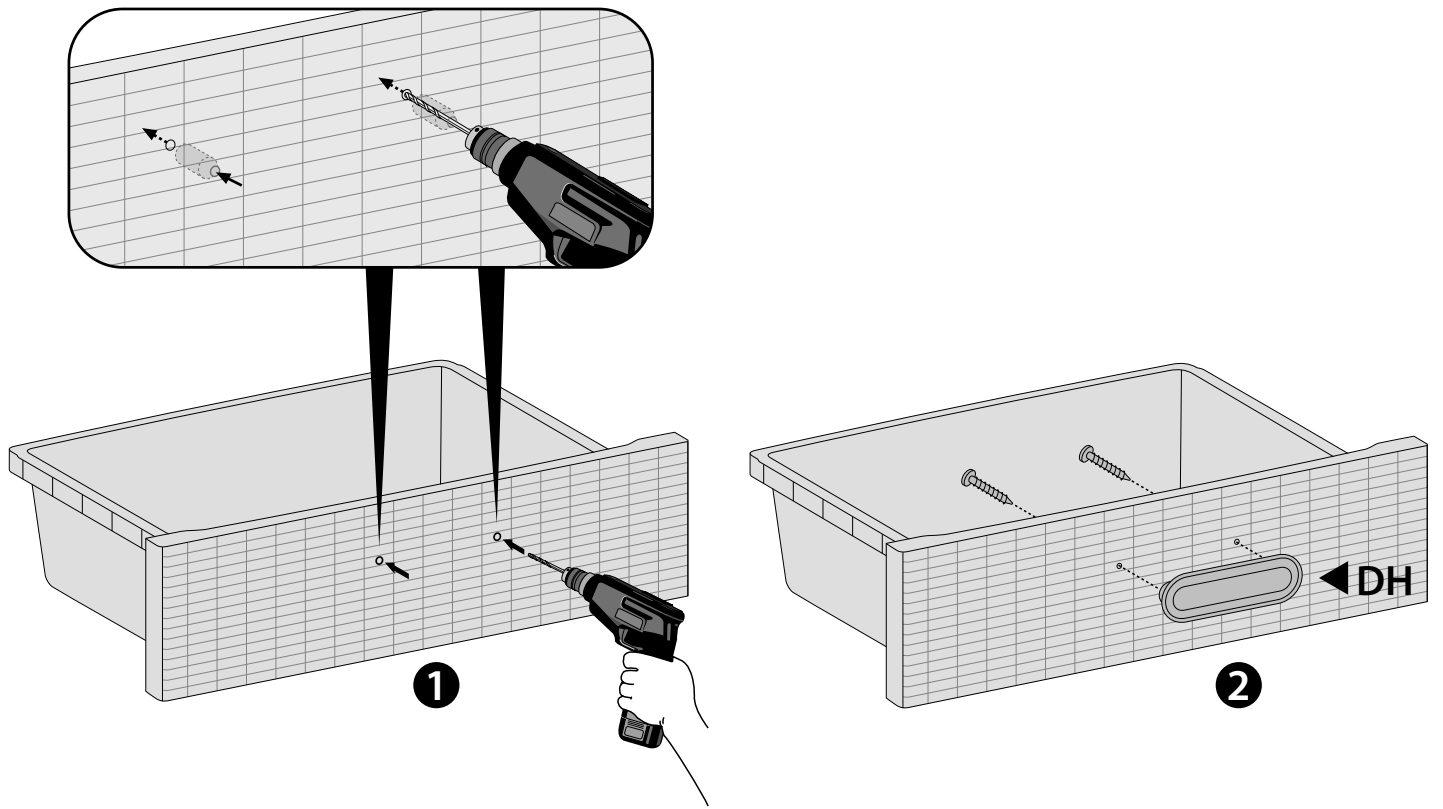
A



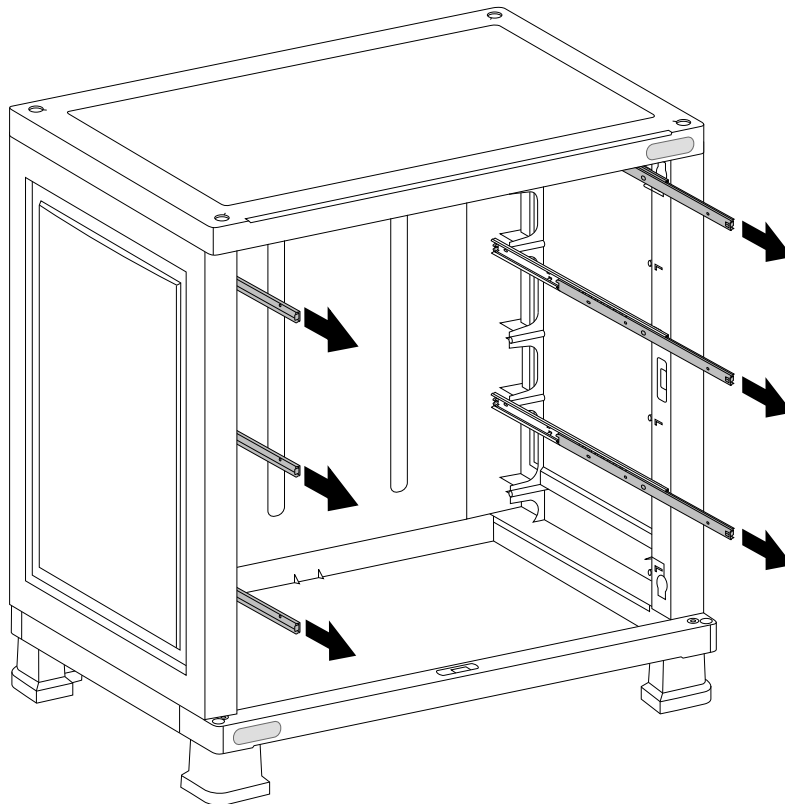
B



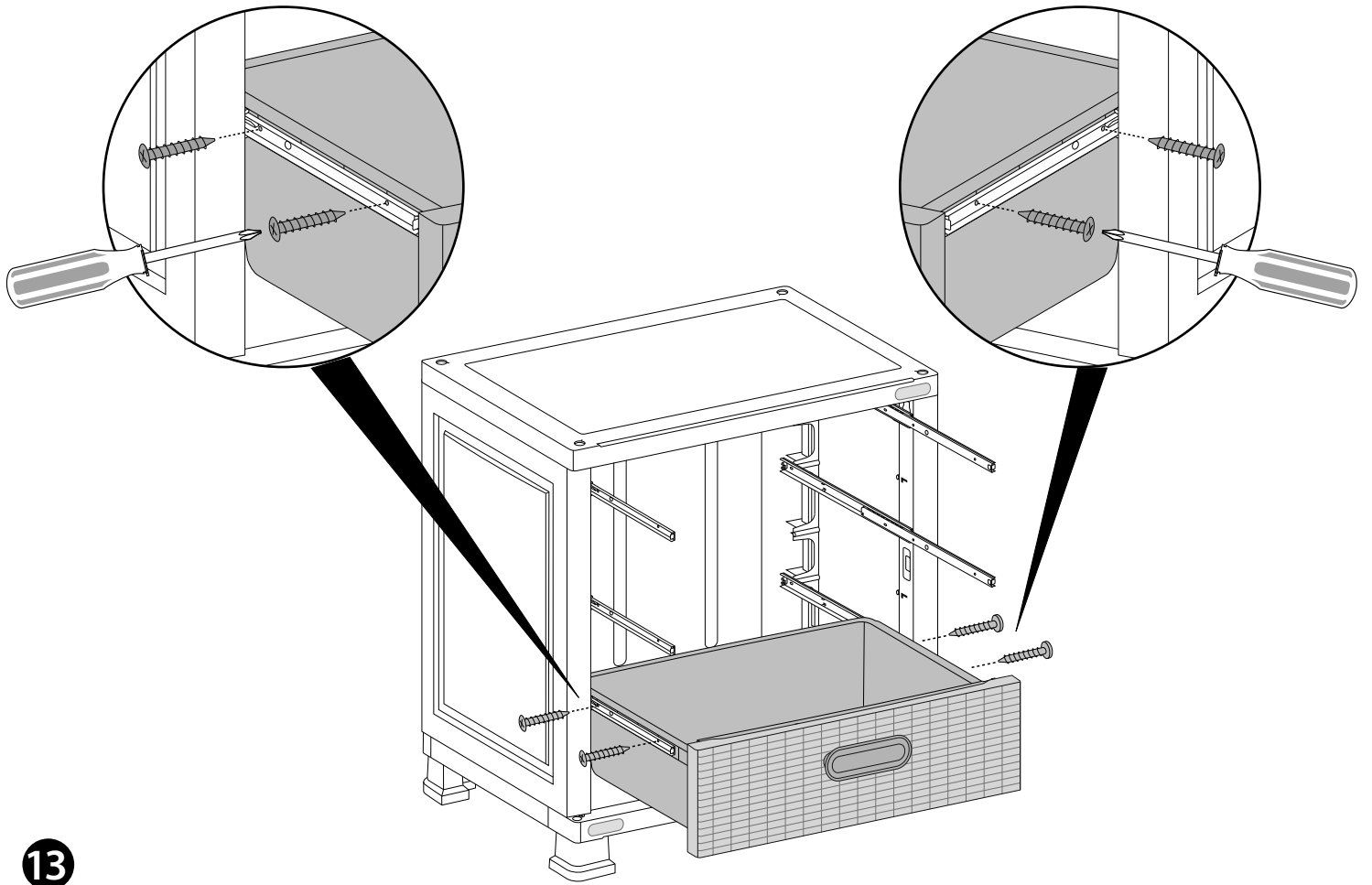
10



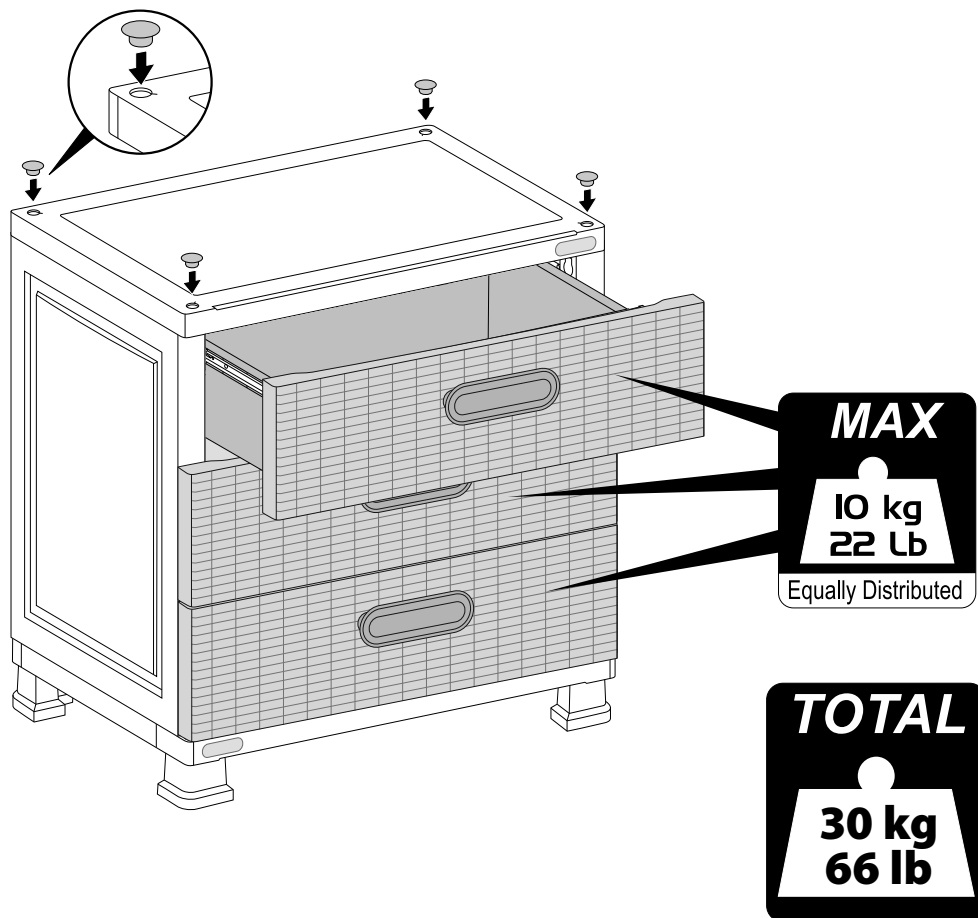
11



12



13



14